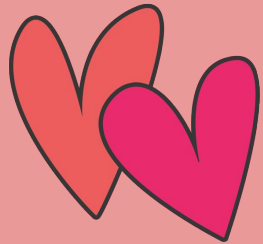


# MSU NSSLHA FEBRUARY GENERAL MEETING



Tuesday, February 14th @ 7pm - Please sign in!



# SEMESTER MEETINGS & CONTACT INFORMATION

## SEMESTER MEETINGS (location TBA):

- Tuesday, March 14th @ 7:00 PM
  - Speaker: Jeff Searl
- Tuesday, April 11th @ 7:00 PM
  - Active member certificates, application process panel

## CONTACT US:

- Website: [msunsslha.weebly.com](http://msunsslha.weebly.com)
- Email: [nsslha@msu.edu](mailto:nsslha@msu.edu)
- Facebook: MSU NSSLHA
- Twitter: @MSU\_NSSLHA
- Instagram: msunsslha



# NEW POINT SYSTEM

Point Categories: This year, meet the minimum point requirement for three out of four of the following categories

- Philanthropy (5 points)
- Fundraising (5 points)
- Social (4 points)
- Meeting (5 points)

Events will be updated/added throughout the semester; please let us know if you have any ideas for events!

**\*New members must achieve half of these points\***



# PIZZA WITH THE PROFS

- ❖ Friday, February 17th
- ❖ 12:30/12:45pm - 2 pm
- ❖ Oyer, Rm 106/107
- ❖ 1 pt
- ❖ *Come & enjoy free pizza while hanging out with our CSD faculty!*



# OYER LECTURE

- ❖ Thursday, March 30th
- ❖ Time/Location: TBA
- ❖ Speaker: Dr. Scott Dailey (University of Iowa)
- ❖ 3 pts
- ❖ <http://cas.msu.edu/events/2017-oyer-lecture/>
- ❖ Information @ March meeting for volunteering



# MSHA

- ❖ Thursday, March 23rd - Saturday, March 25th
- ❖ Detroit Marriott Hotel, Troy
- ❖ Student Round Table: Friday, 9:45am-11:45am
- ❖ 3 pts
- ❖ [http://www.michiganspeechhearing.org/annual\\_conference.p  
hp](http://www.michiganspeechhearing.org/annual_conference.php)



# COLLOQUIUMS/CONFABS

The dates are still being finalized and determined, but we will send out a message as soon as we know!



# APPLICATION PROCESS PANEL

- ❖ Tuesday, April 11th @ 7pm (during the April meeting)
- ❖ Location: TBA
- ❖ Senior board members will be describing the application process including:
  - GRE/Prep classes
  - Letters of recommendation
  - Personal statements
  - Suggestions & timelines
- ❖ Open to *all* NSSLHA members, but especially helpful to sophomores/juniors!





# SOCIAL DINNER

- ❖ Tuesday, March 14th @ 5:30 pm
- ❖ Location: we'll be doing a Facebook poll again
- ❖ 1 pt (social)



# BAR CRAWL

Would like to get an idea of how many people would be interested!

Fun shirts are going to be made for the bar crawl that would be available for any NSSLHA member to purchase!



# MISC. ACTIVITIES

- ❖ Cap decorating
  - Seniors, potential dates, times that work well?
- ❖ Professional Headshots
  - When: Facebook poll
  - Money goes towards NSSLHA cords for graduating seniors
  - Contact Nicole with any questions ([mackerni@msu.edu](mailto:mackerni@msu.edu))



# COMMUNITY SERVICE

- ❖ Saturday, February 25th Burcham Hills social visit
  - 2:00pm - 4:00pm
  - Will do facebook poll or sign up sheet
- ❖ Friday, March 24th Burcham Hills
  - Preuss Pets Animal Encounter and Bingo
  - 1:00pm - 4:00pm
  - Bingo prizes for points?
- ❖ Dr. Punch's research study
  - 2, hour long lab visits
  - \$25 or 2.5 SONA credits
  - 517-881-0852 or [jpunch@msu.edu](mailto:jpunch@msu.edu)



# FUNDRAISERS

**Pizza House** - TBD (Most likely in the middle of March)

**Chipotle** - April 11th from 4:00 - 8:00 pm

- 50% of your bill will go towards the club!
- MUST either bring in the flyer, show it on your phone or tell the cashier you're supporting the cause
- Even though it says the Department, it is for our club
- Facebook event will be made closer to the event



# ONE FOR THE TEAM



Show your team spirit by joining us for a fundraiser to support Department of Communicative Science and Disorders. Come in to the Chipotle at **539 E. Grand River** in East Lansing on **Tuesday, April 11th** between **4:00pm** and **8:00pm**. Bring in this flyer, show it on your smartphone or tell the cashier you're supporting the cause to make sure that 50% of the proceeds will be donated to Department of Communicative Science and Disorders.



If placing an order online during your fundraiser, please note you must choose the pay in-store option and inform our cashier of your participation before paying. Gift card purchases during fundraisers do not count towards total donated sales, but purchases made with an existing gift card will count.

PLEASE WELCOME:

DR. LAPINE



# KODOMO CENTER FUNDRAISER

Thank you everyone!

We raised **\$1,022.80**

Money will go towards:

**Sponsoring a child's therapy sessions**





AND NOW:

# BOARD ELECTIONS

